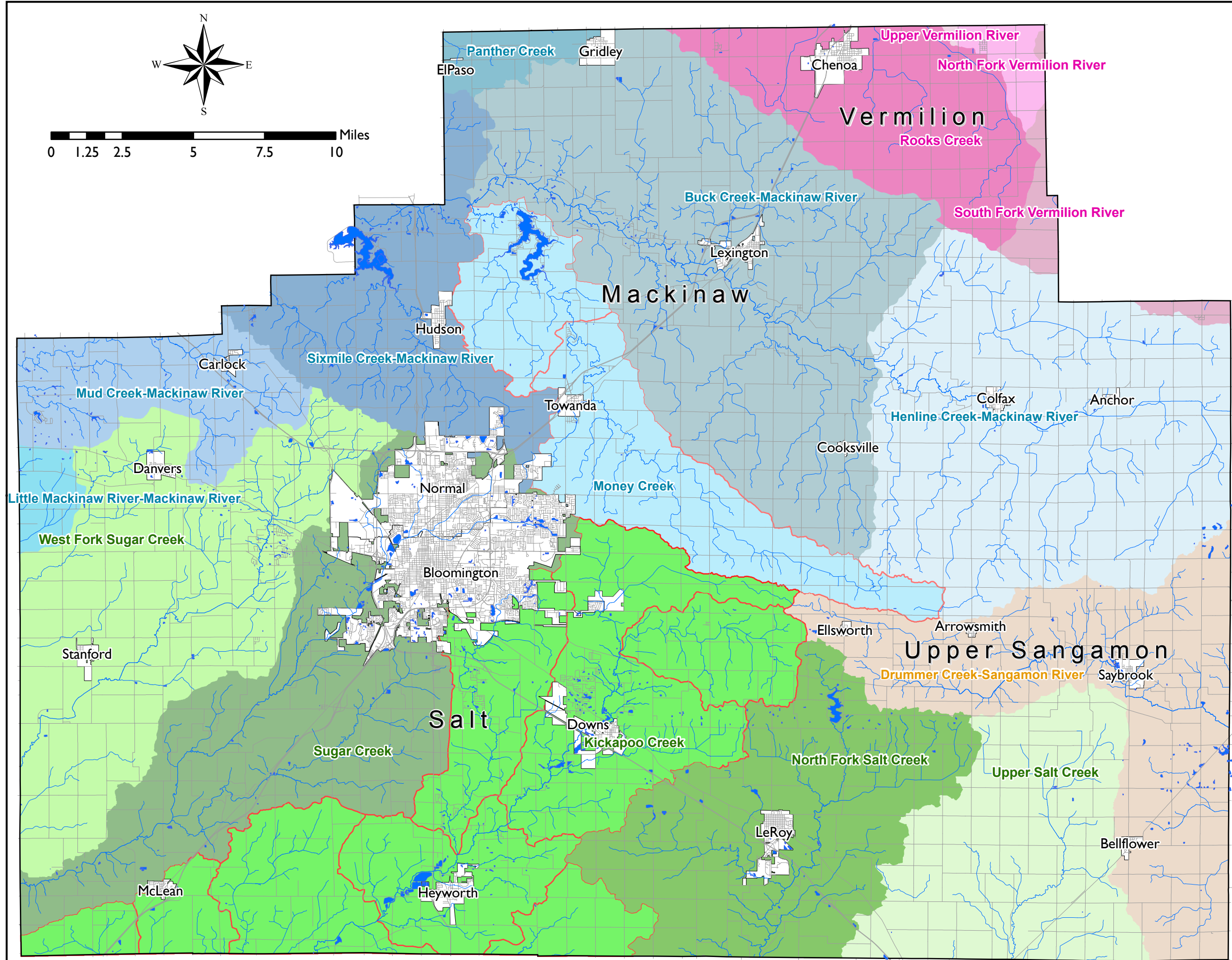
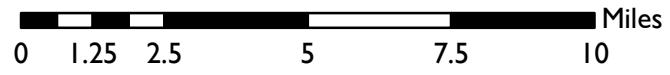
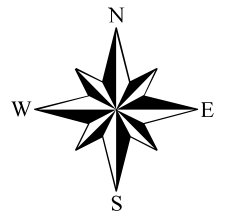


# Map 3.1 Streams and Watersheds

McLean County, Illinois



### Legend

- Rivers and Streams
- Lakes and Detention
- Salt Creek/Upper Sangamon River Basin**
  - Kickapoo Creek
  - North Fork Salt Creek
  - Sugar Creek
  - Upper Salt Creek
  - West Fork Sugar Creek
- Mackinaw River Basin**
  - Buck Creek-Mackinaw River
  - Henline Creek-Mackinaw River
  - Little Mackinaw River-Mackinaw River
  - Money Creek
  - Mud Creek-Mackinaw River
  - Panther Creek
  - Sixmile Creek-Mackinaw River
- Vermilion River Basin**
  - North Fork Vermilion River
  - Rooks Creek
  - South Fork Vermilion River
  - Upper Vermilion River
- Upper Sangamon River Basin**
  - Drummer Creek-Sangamon River
- Environmentally Sensitive Watershed Areas
- Roads and Streets
- Incorporated Areas
- McLean County boundary



McLean County Regional  
Planning Commission

Data Sources: River basin and watershed data from National Resources Conservation Service of the U.S. Department of Agriculture; stream data compiled by McLean County Department of Building and Zoning from 2003 aerial photography; data on County boundaries, incorporated areas, lakes and roads from McLean County, City of Bloomington and Town of Normal, and other local jurisdictions.