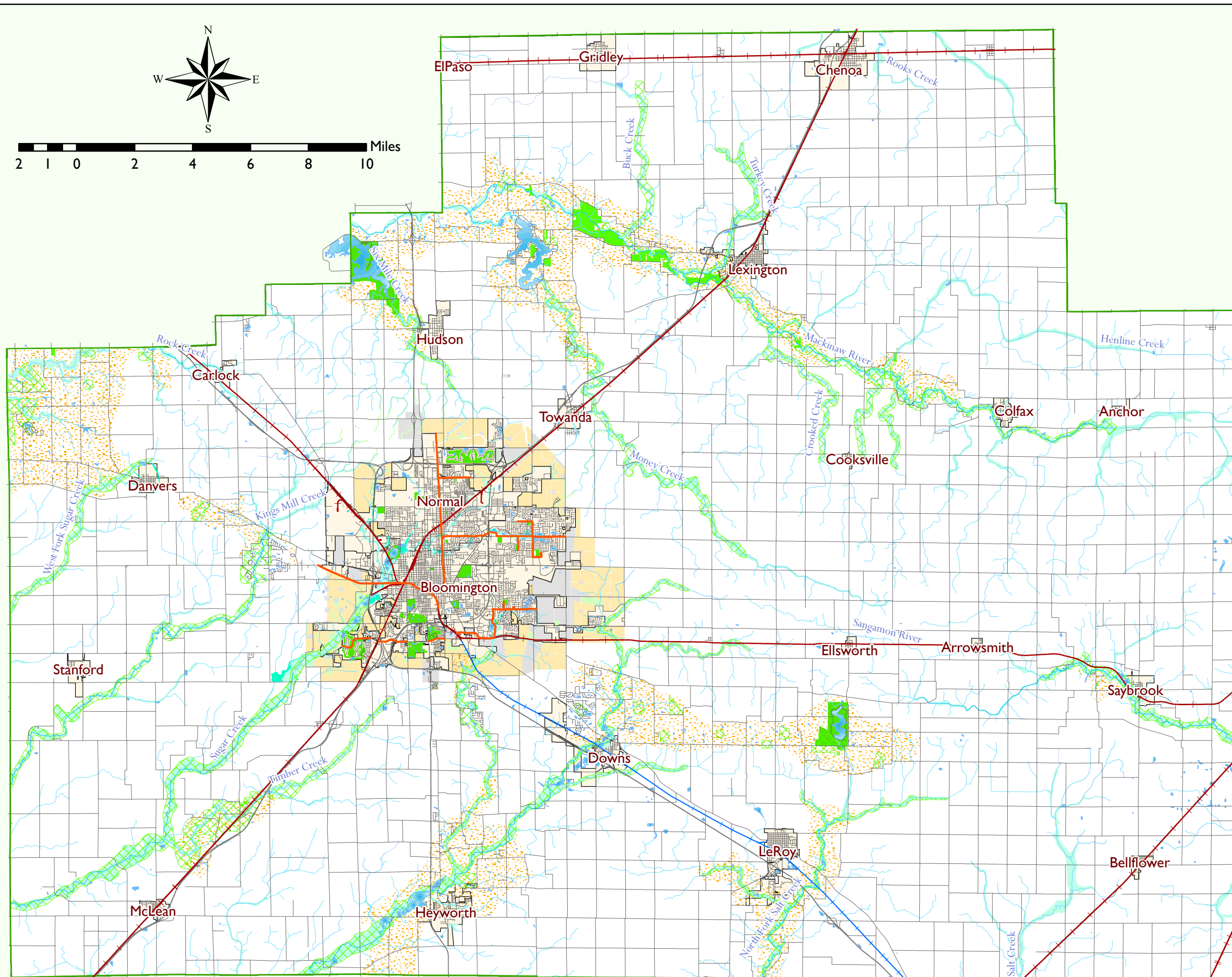


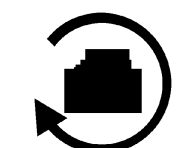
Map 3.3 Greenway Resources

McLean County, Illinois



Legend

- Parks and Recreational Areas
- Conservation Areas
- Wooded Areas
- Less Productive Agricultural Areas
- 100-year Flood Hazard Area
- 500-year Flood Hazard Area
- Lakes and Detention
- Rivers and Streams
- Constitution Trail
- Railroads**
- Active
- Semi-active
- Streets and Roads
- Planned Urban Growth Areas**
- Non-residential
- Residential
- Conservation/recreation
- Corporate Boundaries
- McLean County



McLean County Regional
Planning Commission

Source: Stream data derived from McLean County Department of Building and Zoning stream survey, based on 2003 aerial orthophotography of McLean County; roads, rail, parks, lakes, land ownership and status, and municipal and county boundaries from McLean County, City of Bloomington, Town of Normal and local jurisdictions; flood hazard areas (2001) from Federal Emergency Management Agency, U.S. Department of Homeland Security; watershed data from National Resources Conservation Service of the U.S. Department of Agriculture; wooded areas from McLean County Regional Planning Commission survey of 2007 orthophotography of McLean County; 2035 land use derived from City of Bloomington and Town of Normal comprehensive plans; Constitution Trail data from Friends of Constitution Trail.